



**baptist  
care sa**  
foundation

**A Trusted**

PHILANTHROPIC INVESTMENT



**Your invitation  
to partner**

with Baptist Care SA  
Foundation

**Give. Gift...** *GROW*



## About the Baptist Care SA Foundation

---

# Investing to Transform Lives.

---

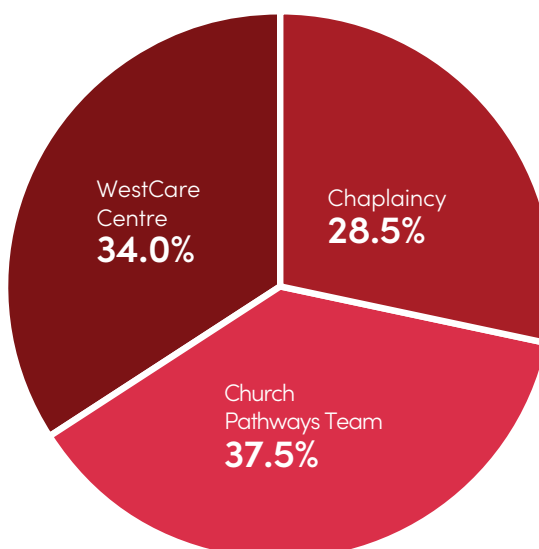
The Baptist Care SA Foundation was established in 2011 with the aim of developing a new capital base to generate permanent, ongoing income with the key objective of providing money, property, or benefits to Baptist Care (SA) Incorporated.

Since its establishment, the Foundation has distributed over \$5,000,000 that has funded various Baptist Care SA Programs.

Baptist Care SA uses funds provided from the Foundation to support the work of the WestCare Centre, Chaplaincy and community services through the Church Pathways team.

### Indicative Baptist Care SA application of Foundation distributions\*

- **28.5%** Chaplaincy
- **37.5%** Church Pathways Team Collaborative Community Projects
- **34.0%** WestCare Centre



\*These allocations are determined from year to year according to need.





### For more than 100 years...

Baptist Care SA has been working on the frontline with South Australia's most vulnerable people supporting them to achieve their life goals.



## Your support will help the Baptist Care SA Foundation to:

- Provide a permanent and increasing income stream to support Baptist Care SA's current and future needs, financing high priority programs and projects.
- Build capital base from which earnings will finance projects that can be catalysts for change.
- Ensure long term sustainability of Baptist Care SA programs and services that may otherwise be at risk because of funding restraints.

A minimum equivalent to 4% of the Foundation capital as at 30 June is distributed annually as required by Taxation laws across various Baptist Care SA programs and projects, with the remaining income reinvested into the Baptist Care SA Foundation.

**All donations are fully tax deductible under the Income Tax Assessment Act.**

### Who we serve

For more than 100 years, Baptist Care SA has been working on the frontline with people struggling with life and left feeling abandoned by their community.

Baptist Care SA works with clients to offer support in their daily life, assistance to join in with the community, help in building positive relationships and improving health and wellbeing.

**Funding provided to Baptist Care SA from the Foundation transforms lives!**

**Give. Gift...** *GROW* 



## A Trusted Philanthropic Investment

---

# Give a gift that keeps on giving!

---

The Baptist Care SA Foundation is a long-term investment fund for the sole future benefit of Baptist Care SA.

The Foundation offers you a unique opportunity to partner with Baptist Care SA in transforming lives.

Your donation will help provide the practical resources to enable Baptist Care SA to support our community by:

- Assisting families facing crisis
- Helping alleviate homelessness
- Addressing addiction
- Supporting youth services
- Funding chaplaincy.

## We invite you to partner with us...

Your participation in building the capital of the Foundation will increase perpetually the funding of projects that will address the real needs of South Australians today and for future generations to come.

We seek donations and bequests from members of the community and private donors, as well as donations, grants and support from businesses and corporations.

**Imagine giving a single gift now that will help fund Baptist Care SA's life-transforming work for many years!**

Gifts to the Baptist Care SA Foundation can be immediate, ongoing, or designated through a will or estate planning.



**Baptist Care SA works with clients to offer support in their daily life...**

assistance to join in with the community, help in building positive relationships and improving health and wellbeing.



## Give.

Make a donation to the Foundation and receive a tax deductible receipt.

## Gift.

Make a gift in your Will or gift part of your share portfolio, real estate, proceeds of a life insurance policy or from collectibles.

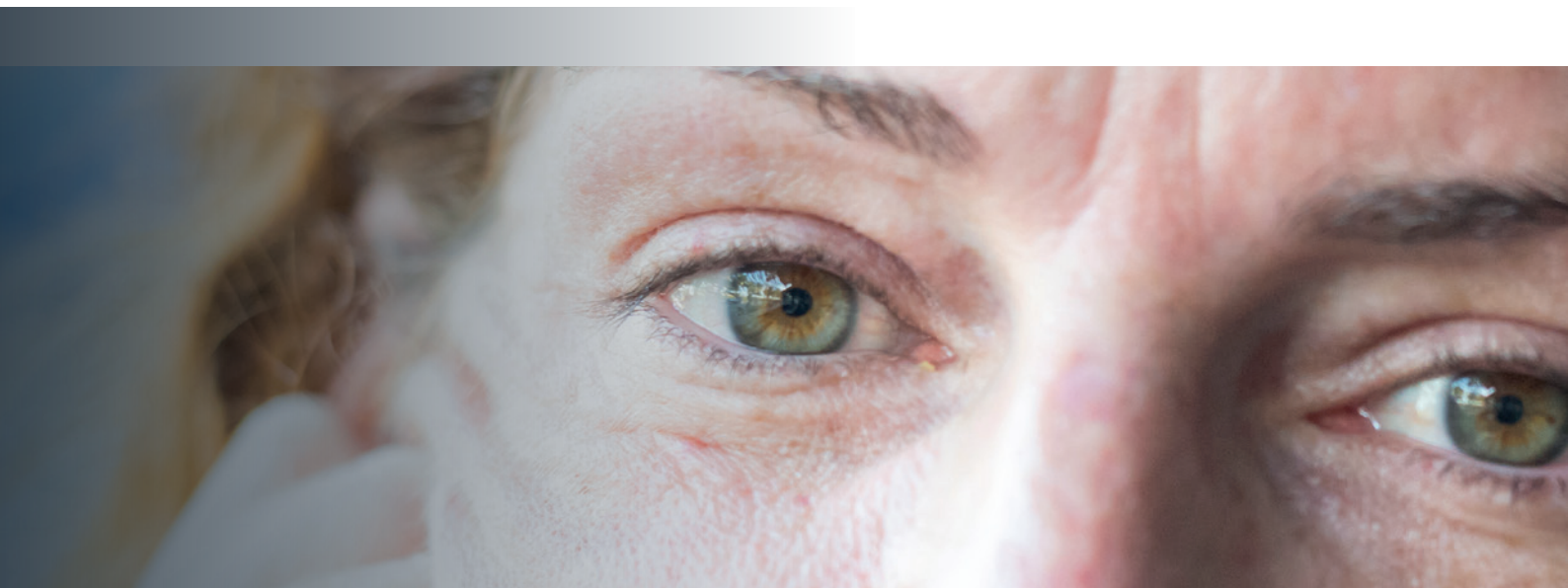


Giving funds are pooled and professionally invested. Investment returns are tax free\* and applied to the investment fund monthly.

\*Subject to taxation laws and regulations.

**Give. Gift...** *GROW* 





## A second chance at life - Jess's Story

---

### **“WestCare saved my life.”**

---

Jess's childhood was tough. She had an alcoholic, violent and abusive father. Her mother did her best to protect her children but unfortunately, it wasn't enough. Jess fled the environment as soon as she could to escape the violence and abuse.

Unfortunately, the price she paid was a lost education. She left school and didn't get qualifications so the only work she could find was unstable and low paid.

Her self-esteem was very low. She was slow to trust anyone. She spent her days worrying and her nights cold and hungry.

“I had lost control of my life really. After living in an abusive relationship, I found I had no one to turn to. I couldn't go home. Finding a place of my own was out of the question because I couldn't afford the rent.”

Being homeless when COVID-19 stopped life as we knew it, she was temporarily placed in a crowded motel. It was a lucky break, for whilst there she found Sue from WestCare.

“Sue and I talked, I could tell she really cared. She understood my fear. She organised a phone for me so she could ring to see how I was going, and she came to visit me when she could. At the time I was in an abusive relationship and WestCare and Sue helped me get an intervention order and domestic violence counselling.”

With support from WestCare and Housing SA, Jess gained a new lease on life and is thriving.

**Your donation will help  
Baptist Care SA's WestCare  
Centre provide support  
that saves lives.**

**The lives of people like Jess.**

\*Name changed to protect privacy.



**"I had lost control of my life really..."**

With support from WestCare and Housing SA, Jess gained a new lease on life and is thriving.



## Foundation Board.

As we look to a future in which the demands on our society for the help of those in need seems only likely to increase, the Foundation highly values any support you are able to provide for our activities and those of Baptist Care SA.

For more information about the Foundation visit: [baptistcaresa.org.au/foundation](http://baptistcaresa.org.au/foundation)



Mr. David Hutton  
Chair



Mr. Shane Austin  
CEO, Baptist Care SA



Mr. Allan Priest  
Deputy Chair



Mr. Terrence Forrester



Ms. Marianke Thompson



Mr. Ian Baldwin



Mr. Robert Beard



Mr. Steve Polglase

**Give. Gift...** *GROW*  7

# Partner with Baptist Care SA Foundation

AND TRANSFORM THE LIVES OF THOSE HURTING  
IN OUR COMMUNITY TODAY!



## Get in Touch

For more information on the  
Baptist Care SA Foundation please contact:

**Hugh Ballantyne**  
Manager, Fundraising

Baptist Care SA  
130 Rose Terrace  
Wayville SA 5034

T: **08 8273 7117**  
E: **[foundation@baptistcaresa.org.au](mailto:foundation@baptistcaresa.org.au)**  
**[baptistcaresa.org.au](http://baptistcaresa.org.au)**



**baptist  
care sa**  
foundation